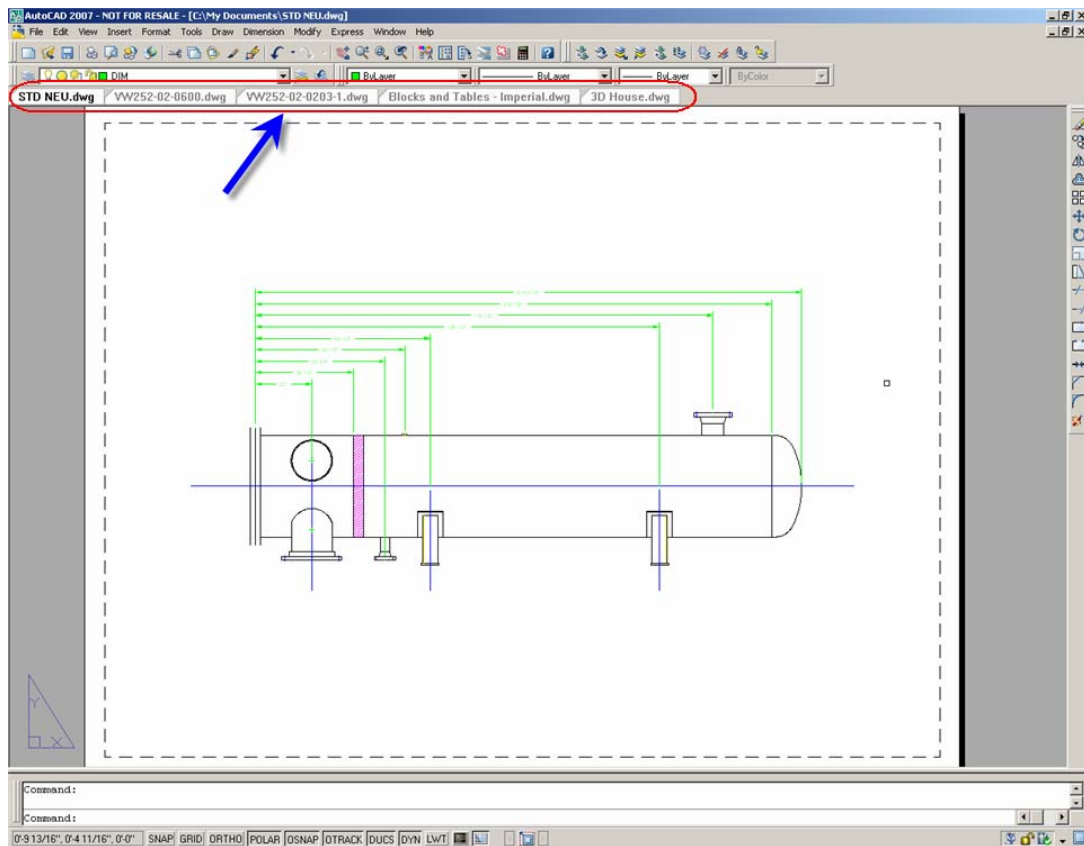


## Bonus Tool: *Drawing Tabs*

This utility allows you to quickly navigate the files which are currently open in your drawing session.



### **Available for:**

- AutoCAD® 2007
- Autodesk® Architectural Desktop 2007
- Autodesk® Building Systems 2007
- AutoCAD® Electrical 2007
- AutoCAD® Mechanical 2007
- Autodesk® Civil 3D® 2007
- Autodesk Map® 3D 2007

### **Known limitations:**

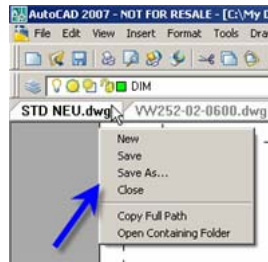
1. This ARX application currently does not work in the upcoming Microsoft Windows Vista operating system.
2. Tool tips do not display in Microsoft Windows 2000.

### **Feedback:**

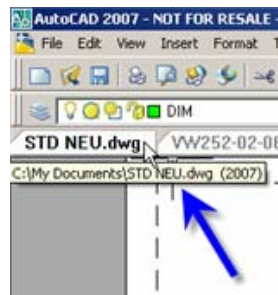
Please e-mail any questions or comments to: [MDITabs-feedback@autodesk.com](mailto:MDITabs-feedback@autodesk.com)

## Product Features:

- a) When loaded, this bonus tool displays a document tab in a docked toolbar for each open drawing file.
- b) Right clicking the tab bring up the following popup menu:

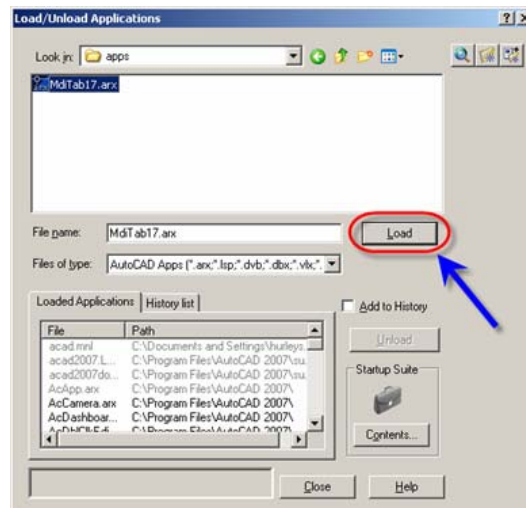


- c) Tool tips display the complete path of the drawing file with its current version:

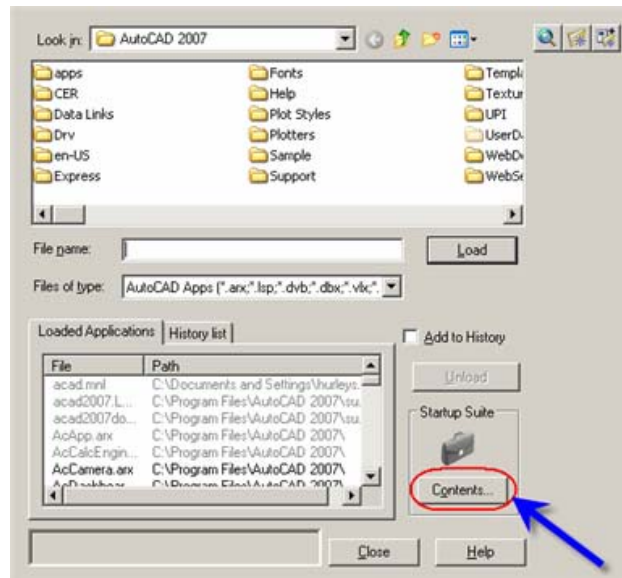


## Installation instructions:

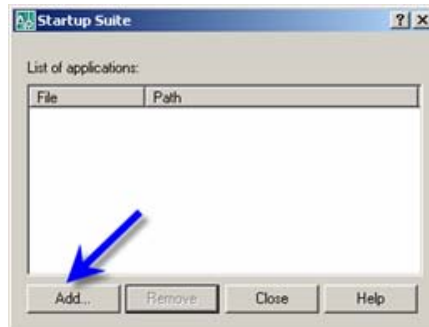
- 1) Download the *MdiTab17.arx* file to a location on your local computer.
- 2) Launch AutoCAD 2007. Type "\_appload" in the AutoCAD command line.
  - a) Select the *MdiTab17.arx* file that you downloaded and then select the "Load" button.



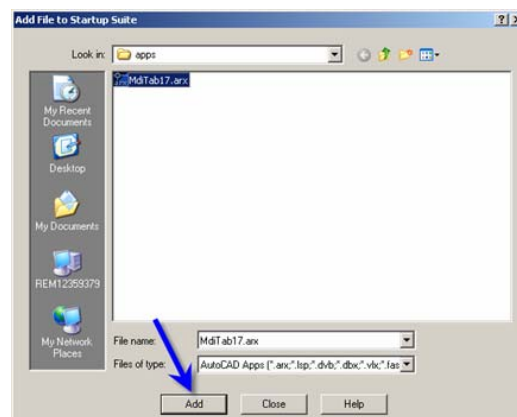
- 3) To have this utility load with each AutoCAD session you need to add it to the Startup Suite
  - a) Type “\_appload” in the AutoCAD command line
  - b) In the “Load/Unload application” dialog click on “Contents” button



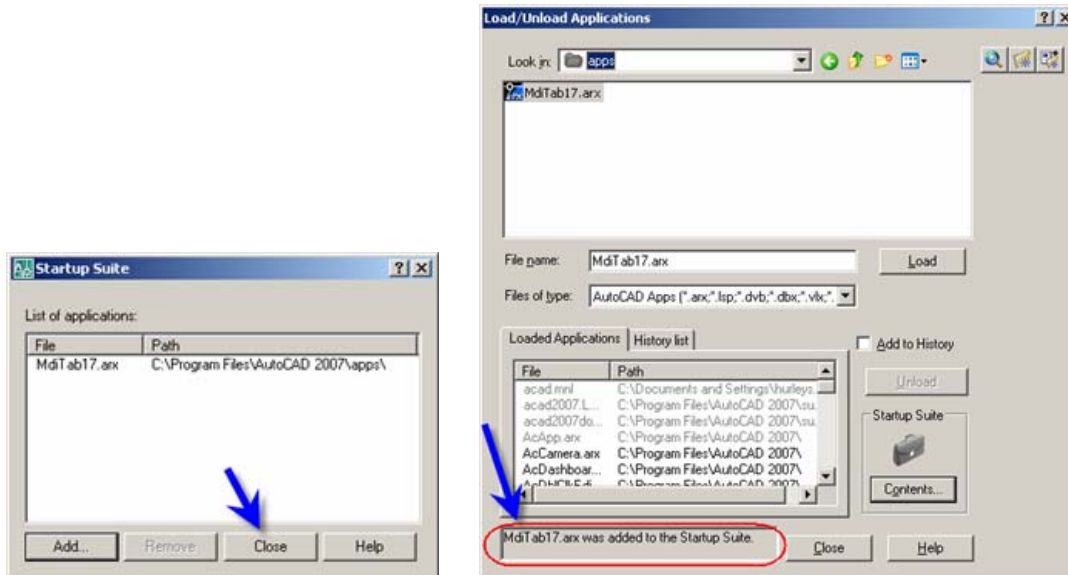
- c) In “Startup Suite” dialog and then select the “Add” button



- d) In “Add File to Startup Suite” dialog, browse to the folder and select the MdiTab17.arx and then select the “Add” button. Close the “Startup Suite”



- e) You will see the MdiTab17.arx has been loaded. Close “Load/Unload Applications” dialog.



The unsupported utility provided is experimental in nature. It has not been tested in any manner, and Autodesk does not represent that they are reliable, accurate, complete, or otherwise valid. Accordingly, the utility is provided “as is” with no warranty of any kind and you use at your own risk. Autodesk expressly disclaims any warranty, express or implied, regarding the utility, including any implied warranty of merchantability, fitness for a particular purpose or non-infringement. Some states do not allow the exclusion of warranty, so the above exclusions may not apply to you.

Copyright © 2006 Autodesk, Inc.